



**Tara Devine**  
Local Government Expert for Business & Development. Intuitive Cook. Unconventional Travel Pro.

500+ connections

Greater Los Angeles Area | Government Relations

**Current** Devine Strategies  
**Previous** Councilmember Jose Huizar, Central City East Association, Former Mayor James K. Hahn  
**Education** University of Southern California  
**Recommendations** 1 person has recommended Tara

## View Tara's full profile. It's free!

Your colleagues, classmates, and 400 million other professionals are on LinkedIn.

[View Tara's Full Profile](#)

### Summary

I thrive at the intersection of the public and private sectors, helping business and development gain traction with local government, and helping local government engage private business and development. My loyal clients are both public and private, which optimizes my connections and reputation in both spheres. My professional experience is divided between the public and private spheres - I have a deep understanding of both. I am passionate about opportunities for local economic development, better urban planning and community-building through private projects and public policy -- inevitably working in a highly political context.

Unconventional travel, unique dining and intuitive cooking engage my creative and adventurous side.

### Experience

#### President

Devine Strategies  
April 2011 – Present (6 years 3 months) | Greater Los Angeles Area

As the founder and principal of Devine Strategies, Ms. Devine focuses on developing successful long-term client relationships, even when consulting projects may be short-term. Her decade of experience working for three elected officials in the City of Los Angeles, combined with nine years in the private sector, make her uniquely qualified to help clients successfully understand and navigate the public sector to achieve desired results. She specializes in government and political advocacy, economic development, community outreach and relationship-building, planning, land use and transportation (including policy/legislation and entitlements/permits), and business improvement district consulting. Her clients run the gamut from Top 100 retailers to local property owners and business groups.

#### Director, Planning & Economic Development

Councilmember Jose Huizar  
July 2008 – April 2011 (2 years 10 months) | Greater Los Angeles Area



As head of his planning and economic development unit, Ms. Devine coordinated all of the programs, policies and projects that related to private development, redevelopment, affordable housing, public projects, real estate, land use, transportation, historic preservation, and environmental affairs. She also staffed and briefed the Councilmember for one of the City Council's most active and influential committees -- the Planning & Land Use Management Committee (PLUM). This citywide committee weighs all land use approvals and appeals which fall under the City Council's purview, in addition to all new land use policies and legislation. Members of Ms. Devine's staff were responsible for staffing the Councilmember for the Public Works Committee, the Southern California Association of Governments (SCAG) and the LA Metro Board of Directors (LA County's regional transit agency.)

#### Director, Government & Business Affairs

Central City East Association  
July 2005 – July 2008 (3 years 1 month) | Greater Los Angeles Area

As the Director of Business & Government Affairs for the Central City East Association, a 501(c)(6) corporation representing the interests of thousands of property and business owners in a 100-block area of Downtown Los Angeles, Ms. Devine was responsible for strategic coordination with elected officials, government agencies and external organizations on behalf of local property owners and businesses. She also directed CCEA's public policy efforts, which focused heavily on public safety, economic development and special project assistance. Key achievements included the extension of the Arts District boundaries through a General Plan Amendment, and the formation of the Arts District Business Improvement District, a \$1.1 million special assessment district providing maintenance, security, marketing and advocacy to 53 blocks of Downtown Los Angeles.

#### Economic Development Representative and Director, Industrial Development Policy Initiative (IDPI)

Former Mayor James K. Hahn  
July 2001 – June 2005 (4 years) | Greater Los Angeles Area

Ms. Devine served as former Los Angeles Mayor James K. Hahn's Economic Development Representative for Downtown Los Angeles -- just as its long-sought renaissance began. In this capacity, she assisted adaptive reuse loft projects, LA Live, the Grand Avenue Masterplan, Walt Disney Concert Hall, the new LAPD Headquarters, and numerous other residential, commercial and cultural projects - projects representing more than \$10 billion in new private investment. She assisted pioneer restaurants, bars, lounges and retail -- bringing some of the first "24/7" amenities and entertainment back into a traditionally "9-to-5" downtown.

#### Senior Economic Development and Policy Analyst

Former Mayor Richard J. Riordan  
September 1998 – June 2001 (2 years 10 months) | Greater Los Angeles Area

Ms. Devine cut her political teeth as a member of former Los Angeles Mayor Richard J. Riordan's highly successful LA Business Team, working on several high-priority administration initiatives such as Business Tax Reform and Genesis LA.

#### Commercial Accounts Analyst

AIG  
April 1997 – September 1998 (1 year 6 months) | Greater Los Angeles Area



### Skills

- Public Policy
- Government
- Economic Development
- Community Outreach
- Policy
- Urban Planning
- Community Development
- Public Speaking
- Land Use Planning
- Affordable Housing
- Project Planning
- Regional Planning
- Zoning
- Planning
- Historic Preservation
- [See 29+](#)

### Education

#### University of Southern California



### Recommendations

A preview of what LinkedIn members have to say about Tara:

“ Tara's background on government affairs, and her expertise in Land Use makes her ideal in this business. Her people's expertise and social and business networking is an skill that she ha...  
[See more](#)

[Sign up to see who recommended Tara](#)

### Groups

- Alliance for Nonprofit...
- Government Relation...
- American Associatio...
- Strategic Planning fo...
- GOVERNING
- Urban Real Estate Pr...
- Downtown LA Reside...
- [See 7 more >](#)

## View Tara's full profile to...

- See who you know in common
- Get introduced
- Contact Tara directly

[View Tara's Full Profile](#)

Not the Tara you're looking for? [View more](#)

[View this profile in another language](#)

### Find a different Tara Devine

First Name  Last Name  [Q](#)

Example: Tara Devine

- Tara Coker Devine, PhD**  
United States
- Tara Devine**  
Administrative Assistant at McCormick Taylor, Inc.  
United States
- Tara Devine**  
Partner at Salvi, Schostok & Pritchard  
United States
- Tara Devine**  
Career Services Advisor at Lincoln Technical Institute  
United States
- Tara Devine**  
Data Analyst  
United States

[More professionals named Tara Devine](#)

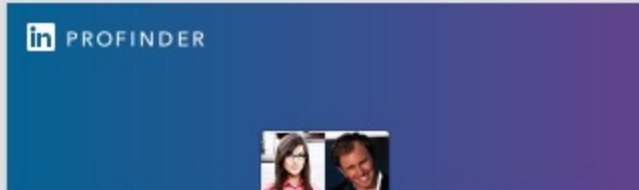
### Public profile badge

Include this LinkedIn profile on other websites

[View profile badges](#)

### People Also Viewed

- Laura McLennan**  
Deputy Chief of Staff at City of Los Angeles
- Afreca Howard**  
--
- Carol Schwartz**  
Residential Real Estate Development
- Jonathan Kevles**  
Vice President, Government Affairs and Market Development at Renewable Funding
- Mike Bonin**  
City Councilmember, 11th District at City of Los Angeles
- Athena Novak**  
Public Outreach, Land Use & Management
- Nick Maricich**  
Director of Planning Policy and Development at Office of Los Angeles Mayor Eric Garcetti
- Elizabeth Peterson-Gower**  
Founder of EPG / Urban Land Use & Business Development Services / Mixed Use, Adaptive Reuse & Hospitality Developments
- Todd Tyni**  
Assistant Principal at Los Angeles Unified School District
- Hannah Lee**  
Chief Planning Deputy at Office of Councilmember Mitchell Englander, Council District 12, City of Los Angeles



Hire independent Wills Lawyers like Tara

[Post your project - It's free ->](#)

[See Wills Lawyers available for hire](#)



## Find your next opportunity

Add a position to get relevant job recommendations.

[Add your position](#)